

touch 65™
touch 90™

Contact Readers



General Description

Datalogic Scanning, the global manufacturer of Linear Imager and Laser bar code readers, offers a wide range of Hand-Held products particularly suited for Document Handling and Retail applications.

The Touch 65/90™ Linear Imager contact readers represent the ideal product whenever a cost-effective solution is required, without compromising reading performance and product quality.

Touch 65/90™ Pro provide a complete "all in one" multi-interface solution, including RS-232, USB, Wedge and Pen emulation while Touch 65/90 Light provides USB or PS2 wedge and RS-232 single models. A scan rate of 256 scans/sec guarantees outstanding performance in terms of reading promptness, especially on poorly printed or damaged codes, where several decoding attempts may be required.

Furthermore, the Touch 65/90™ family benefits from PUZZLE SOLVER™, a decoding technique introduced and patented by Datalogic. It allows the readers to collect partial data from successive scans and combine it to obtain complete information, rather than approaching the decoding process as a "one scan" confined operation. This increases "good read" results considerably.

The Touch 65/90™ Pro models also add built-in Data Formatting and Data Editing features that allow the user to shape the collected data according to whatever format is required by the application software.

Features

- > Scan rate 256 scans/sec
- > USB, RS-232, Wedge and Pen in a single model (Pro models)
- > GS1 Databar reading available
- > Enhanced multi-standard architecture
- > 65 and 90 mm reading window
- > PUZZLE SOLVER™ decoding system
- > Complete data formatting and data editing (Pro models)
- > Sunrise 2005 compliant

Applications

- > Data collection in commercial and office automation environments
- > Data collection in light industrial environments

Specifications

-ELECTRICAL CHARACTERISTICS

POWER SUPPLY 5 VDC \pm 5%
Directly from the terminal or PC in USB, Wedge and Pen mode, or via an external PG5 power supply in RS-232 mode

CONSUMPTION

150 mA max.

MECHANICAL CHARACTERISTICS

DIMENSIONS 164 x 77.5 x 63 mm (all Touch 65™ models)
175 x 100 x 80 mm (all Touch 90™ models)

WEIGHT (approx.) 160 g (all Touch 65™ models)
195 g (all Touch 90™ models)

CASE MATERIAL

--

CABLE LENGTH

2 m (6.6 ft) linear

PERFORMANCE

LIGHT SOURCE Visible red LED

MAX. RESOLUTION 0.10 mm / 4 mils (all Touch 65™ models)
0.13 mm / 5 mils (all Touch 90™ models)

SCAN RATE 256 scans/sec

PRINT CONTRAST RATIO 15% min (Pro models) – 25% min (Light models)

READING FIELD 63 mm (all Touch 65™ models)
80 mm (all Touch 90™ models)

READING DISTANCE 0 to 50 mm on EAN 13 code MAG1

READABLE BAR CODES 2/5 family, Code 39, Code 32, Code CIP 39, Code 128, EAN128, EAN/UPC, ISBN/ISSN, CODABAR, Code 93, ISBT128, MSI, Plessey, Telepen, Delta IBM, Code 11, Code 49, Code 16K, GS1 Databar

READING INDICATORS

READING MODE LED and adjustable tone "beeper"

PROGRAMMING METHOD Single or autodiscrimination code

Manual

Reading special bar codes

Automatic (with RS-232)

S/W commands through the serial port

DL Aladdin™

Windows configuration program

DATA MANAGEMENT

Touch 65/90™

Data formatting (Header, Terminator, Code ID, Code Length, etc.);

Touch 65/90™ Pro

Data formatting and data editing (string deletion and insertion, character replacement, code concatenation, etc.)

INTERFACES

USB, RS-232, Wedge, Pen (Pro models)

UTILITIES

USB or RS-232 and Wedge (Light models)
OLEPOS and JAVAPOS can be downloaded free of charge at www.datalogic.com

ENVIRONMENT

OPERATING TEMPERATURE 0 to 55 °C

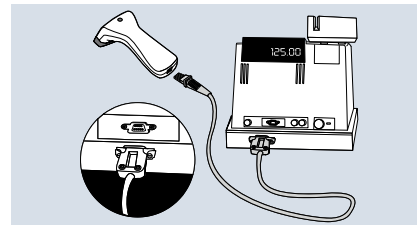
STORAGE TEMPERATURE -20 to 70 °C

HUMIDITY 90% non condensing

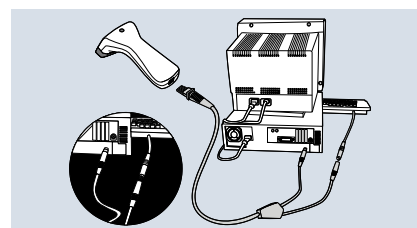
DROP RESISTANCE Withstands drops from 1.2 m onto a concrete surface

ENVIRONMENTAL PROTECTION IP30

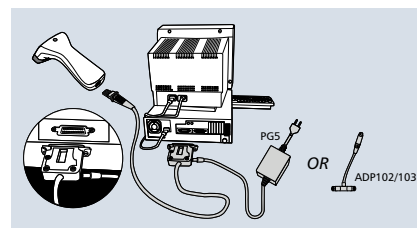
Connections



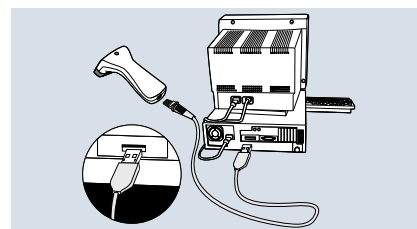
Pen Emulation



Wedge Emulation

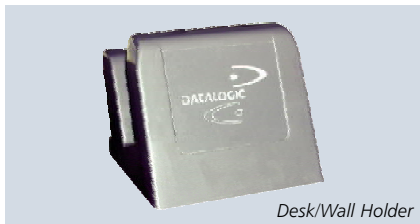


RS232

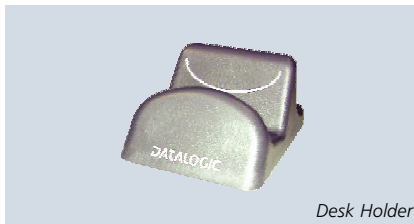


USB

Accessories



Desk/Wall Holder



Desk Holder

SPC-Touch 65™ Desk/Wall Holder

The desk/wall holder can be placed on a desk or fixed to wall, providing flexibility of use.

SPC-Touch 65/90™ Desk Holder

The small size of the Touch 65/90™ desk holder guarantees optimized desk space.